

LONG-LASTING COLLAGEN BOOSTER

Singderm[®]

Poly-L-Lactic Acid Filler For Injection

Singderm[®]

Poly-L-Lactic Acid Filler For Injection

Hangzhou Singclean Medical Products Co., Ltd.

Add: No.125(E), 10th Street, Hangzhou Qiantang Area, Zhejiang, China P.C.: 310018

Tel: +86-571-63431868

Fax: +86-571-63431886

E-mail: marketing@singclean.net

www.singclean.net



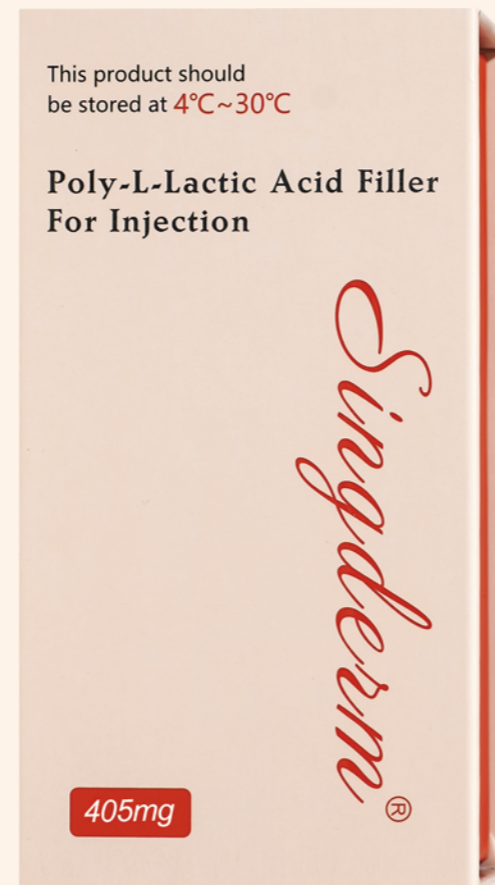
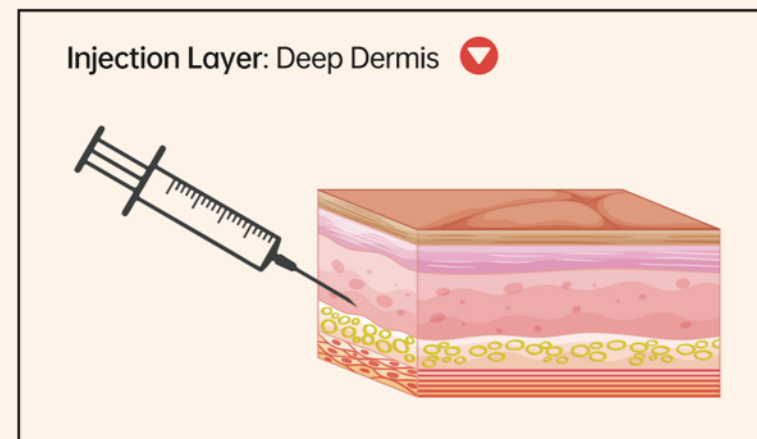
 Singclean
Medical

SINGDERM®

LONG-LASTING COLLAGEN BOOSTER

Singderm® is a dermal tissue filler, composed of poly-L-lactic acid, sodium carboxy-methyl cellulose and mannitol. It is white lyophilized powder, packed in a bottle, sealed with butyl rubber stopper and aluminum-plastic cap.

It is used for deep dermis injection to stimulate collagen production and increase the volume of depressed areas and correct moderate to severe facial wrinkles.



Singderm® Introduction

- Components** PLLA, sodium carboxy-methyl cellulose, mannitol
- Specification** 405mg, 320mg, 240mg, 165mg
- Use Needle** Needle no smaller than 26G needle
- How to Use** Pour different sterile water according to different specification and mix well

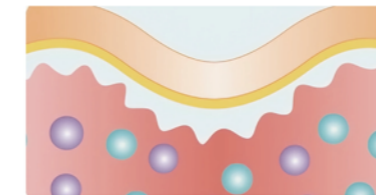
405mg: 5.0mL 320mg: 4.0mL 240mg: 3.0mL 165mg: 2.0mL

WHAT IS PLLA?

Poly-L-lactic acid (PLLA) is one of the few FDA-approved, safe, and reliable biodegradable synthetic biomaterials. The intermediate product of PLLA degradation is lactic acid, which ultimately undergoes self-metabolism in the body, breaking down into water and carbon dioxide. It can stimulate the natural regeneration of collagen and elastic fibers in the body, effectively improving facial sagging, wrinkles, and other skin issues.

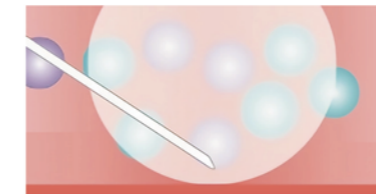
Mechanism of PLLA

In the deep layers of the dermis, circular granular filler particles are observed, surrounded by a small number of fibroblast cells, indicating the generation of new collagen. Some collagen appears coarse, enveloping the implant. There is minimal infiltration of inflammatory cells around the implant.



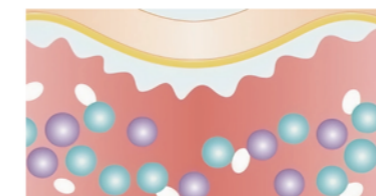
Before injection

Depression before treatment.



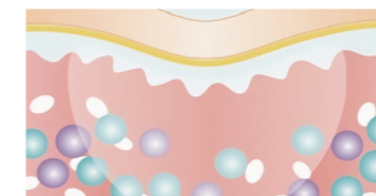
0-1 days after injection

PLLA injection immediately filled in the depression.



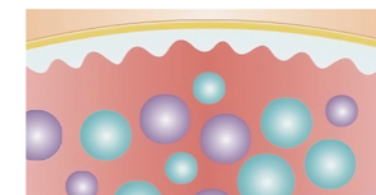
3-4 days after injection

A few days after the first treatment, the water in the material is absorbed by the body, and the depression recovered slightly.



7-14 days after injection

The body's fibrous connective tissue builds and eliminates depressions and defects are eliminated.



28 days after injection

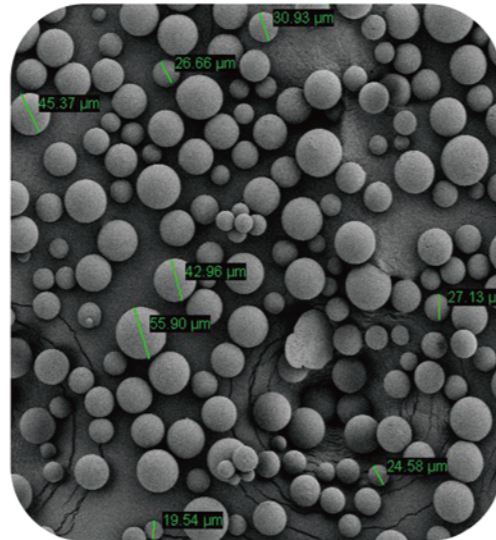
After about 4 weeks, the improvement effect can be clearly seen, but deeper depression needs further treatment.

Why Singderm® PLLA filler?

Superior Product Features and Excellent Biocompatibility

Singderm® PLLA microsphere SEM image particle size D50: 20~40µm

- Uniform Molecular Weight And Microsphere Particles:** Singderm® PLLA has controlled release of polylactic acid with few side reactions.
- Smooth Surface:** Reduces irritation to the body.
- Moderate Diameter:** 20~40µm particle size ensures that the particles are large enough to avoid being phagocytized by dermal macrophages or passing through capillary walls, but at the same time trigger a smaller immune response and can be easily injected with needles as thin as 26G. Provide consumers with a painless and comfortable injection experience without needle clogging and nodules.



Powerful Advantages

1 Advanced Technology

Independently developed preparation process from microspheres to fillers. Microsphere preparation process has applied for a Chinese patent.

2 Safe

PLLA is biodegradable, can be degraded and metabolized out of the body; it is also biocompatible, well-tolerated by the body and does not typically cause adverse reactions. This material has been proven safe and effective with numerous medical applications for more than 25 years.

3 Effective

By stimulating natural collagen production, Singderm® can offer long-term result, enhancing improved skin elasticity and firmness over time. It is ideal for consumers 30+ who are seeking solutions for skin ageing, dermal deficiencies, and sagging, particularly in areas like the cheeks, temples, and around the nasolabial lines.

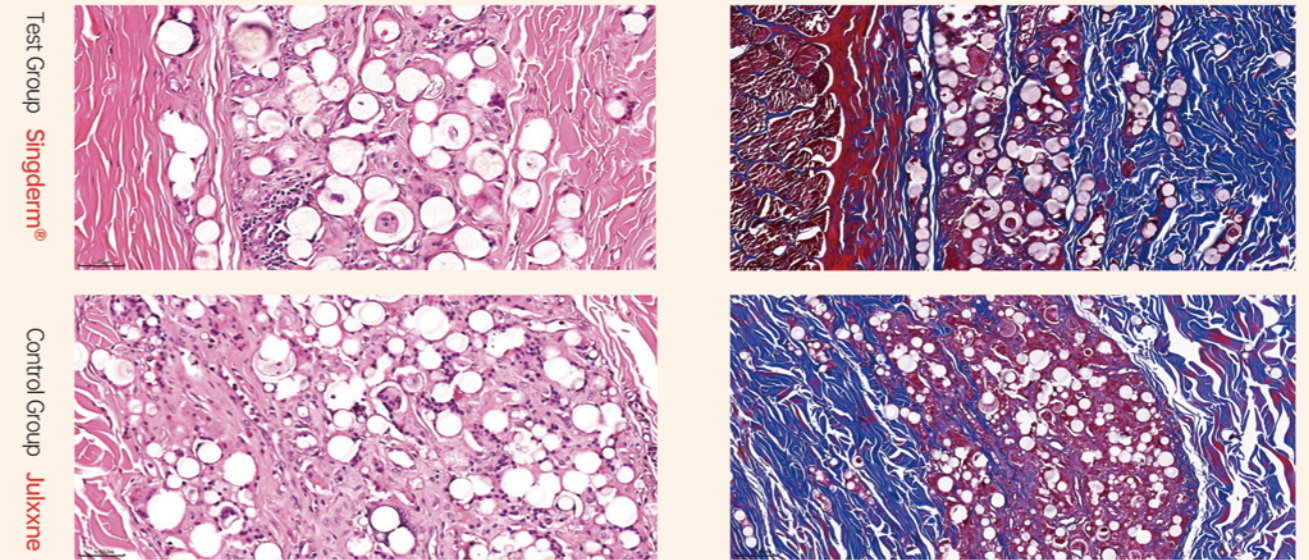
4 Long-lasting

PLLA-based fillers provide gradual and long-lasting results compared with traditional hyaluronic acid fillers. As the body gradually breaks down PLLA, fibroblasts around injection site are activated, collagen continues to be produced. Visible volume enhancement and effects can be shown from 4 weeks after treatment and lasting over 24months.

5 Versatile

Singderm® offers different specifications to meet the needs of different consumers, targeting different severity levels of wrinkles degree. It is widely used in procedures such as facial rejuvenation, non-surgical facelifts and can be used to address various facial areas.

Better Performance-Singderm® Collagen Booster



▲ Inflammatory Reaction Situation

▲ Collagen Proliferation Situation

Compared with Control Group, after 6 months of implantation in the body, more fibroblast cells can be seen around the round granular PLLA filler in the deep dermis of the skin for Test Group, indicating the generation of new collagen. Some collagen appears coarse, enveloping the implant. There is less infiltration of inflammatory cells around the implant.

Comparison with Sculxxxa

Comparison indicators		Singderm®PLLA	Sculxxxa
Microspheres (micro structure)	Particle size	D ₁₀ >10µm, D ₅₀ : 20-40µm, D ₉₀ <100µm	40~63µm
	Shape	Spherical, smooth and uniform	Flaky, irregular
Specifications		405 mg/vial 240 mg/vial 37% poly-L-lactic acid, 36% mannitol and 27% sodium carboxy-methyl cellulose Various specifications, providing different reconstitution specifications for different beauty seekers	320 mg/vial 165 mg/vial The total volume of the product as the labeling volume—The corresponding volume of PLLA 367.5mg/vial—150mg Only one specification
Features	Complete reconstitution time	Reconstitution with sterile water for injection: 1 hour	Reconstitution with sterile water for injection: 24 hours
	Inflammation	Mild	Frequent inflammation

Preparation Steps:

STEP 1



Remove the aluminum plastic cap, connect 22G needle to 5mL syringe, followed by slowly adding the sterile water for injection into the penicillin bottle. Different sterile water according to different specifications.

STEP 2



After adding the sterile water for injection into the penicillin bottle, shake evenly and let stand for 30 minutes to 60 minutes to ensure complete dissolution of the lyophilized powder and removal of the bubbles.

STEP 3



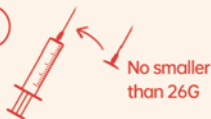
Before extracting the suspension, gently shake the penicillin bottle.

STEP 4



After sterilizing the rubber stopper, draw 1-3mL of the suspension into a sterile disposable syringe using a new 22G sterile needle.

STEP 5



Before treatment, switch to a sterile needle (no smaller than 26G) for injecting.

STEP 6



Start Injection.

Before Treatment

Preparation Materials

- ✓ Alcohol cotton
- ✓ Sterile Latex Gloves
- ✓ Sterile water for injection
- ✓ Disposable Sterile Syringe (1mL-5mL)
- ✓ Sterile needle (22G, no smaller than 26G)

Product Dosage

The dosage and number of injections will depend on the consumer's needs and the severity of the treatment site. To achieve the desired effect, multiple injections may be required.

Procedure Sessions: 2/3 sessions
Interval between sessions: 4 Weeks

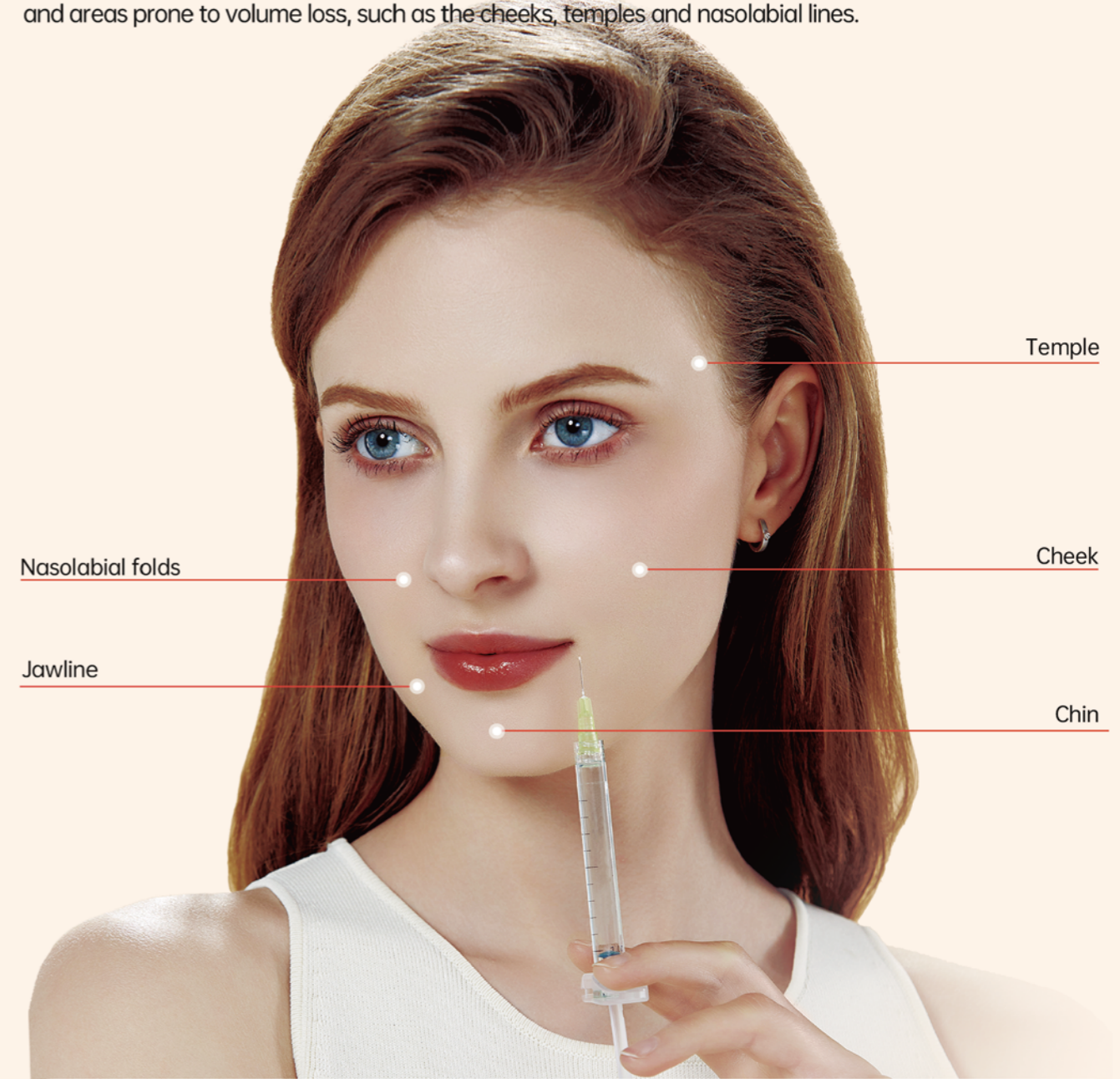
Each individual injection should not exceed a maximum volume of 0.1ml-0.2ml, spaced 0.5-1cm apart.

Injection Technique

- In order to control the injection depth, stretch/pull the skin opposite to the direction of injection to keep the injection surface flat;
- Using a sterile needle no smaller than 26G, enter the skin at an oblique angle of 30°~40°;
- After reaching to the deep dermis, the needle is advanced at an angle of 10° to 20°; In order to avoid the product entering blood vessel, the syringe should be withdrawn first. If blood withdrawn, the needle should be pulled out. Re-operate after replacing the needle;
- If no blood withdraw, retrograde injection can be performed, which is pulling out the needle while advancing the syringe piston;
- After every 3 to 4 points of injection, the filling site should be massaged to evenly distribute the product.

Treatment Area

The treatment is ideal for consumers 30+ who are concerned with skin aging, dermal deficiencies, laxity and areas prone to volume loss, such as the cheeks, temples and nasolabial lines.



Post-Treatment Care

After injection, ice packs can be used on the filling site (direct contact with the skin should be avoided) to reduce adverse reactions such as swelling and/or pain.

For the first 5 days after injection, consumers should massage the filling site regularly (5 minutes each time, 5 times a day is recommended) to promote natural facial correction and reduce the occurrence of papules and/or nodules.

Contraindications

- Consumers who are allergic to any constituents of Singderm® are prohibited from using the product.
- Consumers with acute or chronic skin disease in the therapeutic part do not use the product.
- Consumers with a history of crab foot swelling, prone to keloid or hypertrophic scar, do not use the product.
- Consumers during pregnancy, lactation, or under the age of 18, do not use the product.