

Singderm® Dual

Calcium Hydroxyapatite Hybrid Filler

A Global Breakthrough: Singderm® Dual, the Future of Facial Contouring



1+1>2

A Unique Blend of CaHA and Hyaluronic Acid

Dual

Calcium Hydroxyapatite Hybrid Filler

Singderm®

A Superior Dual-effect Hybrid Filler

Hangzhou Singclean Medical Products Co., Ltd.

Add: No.125(E),10th Street, Hangzhou Qiantang Area, Zhejiang, China

Tel: +86-571-63431868

www.Singderm.com

P.C.: 310018

Fax: +86-571-63431886

What Is Singderm[®] Dual Calcium Hydroxyapatite Hybrid Filler?

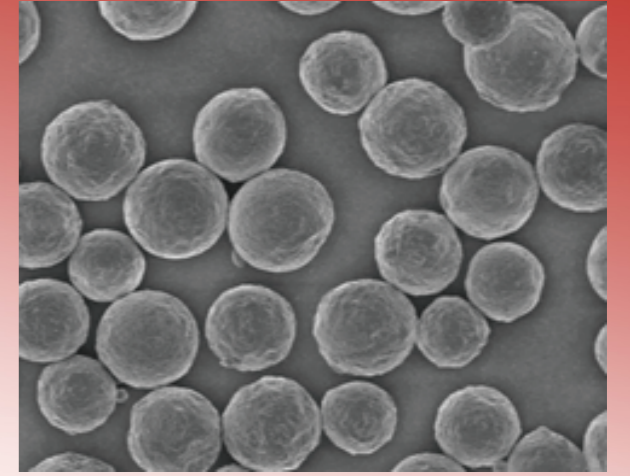
Singderm[®] Dual is a sterile, biodegradable, nonpyrogenic, viscous, opaque, semisolid, latex-free dermal filler. It is formulated in a physiologic buffer, consists of synthetic calcium hydroxyapatite microspheres at a concentration of 56%, cross-linked hyaluronic acid (HA) at a concentration of 20 mg/mL, and 0.3% lidocaine. Sodium hyaluronate is derived from bacteria fermentation.

Singderm[®] Dual is intended for deep dermal to subdermal implantation for the correction of moderate to severe facial wrinkles, folds and/or volume increase, such as nasolabial folds, marionette lines, jawline, cheeks and nose.



Mode of Action

The injection of the Singderm[®] Dual can produce an immediate corrective effect. When the gel carrier is absorbed, calcium hydroxyapatite particles act as a scaffold for new tissue formation and collagen deposition to adsorb fibroblasts, stimulate fibroblasts to secrete collagen (mainly type I and III) and various elastic fibers through direct mechanical conduction, promote the growth of collagen fibers, and restore skin elasticity and support. Over time, calcium hydroxyapatite particles are broken down into calcium and phosphate ions, which are slowly eliminated through the body's normal metabolic pathways.



Specifications

0.5mL/pc, 0.8mL/pc, 1mL/pc



Core Ingredients

- 20 mg/mL of cross-linked hyaluronic acid (HA)
- 56% CaHA Microspheres with smooth surface, particle size 25-45 μ m, fully chemically synthesized
- 0.3% lidocaine



Efficacy

Immediate fill + long-term lifting



Application

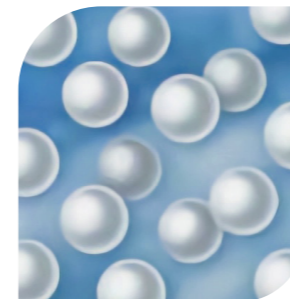
Correction of moderate to severe facial wrinkles, folds and/or volume increase



Suitable For

People experience a loss of volume and structural support in the face and seeking for one quick injection.

Immediate 1:1 correction due to gel matrix



IMMEDIATE

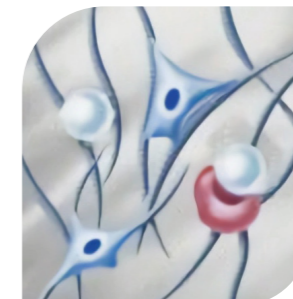
Gel matrix with CaHA microspheres results in effective wrinkle filling and 1:1 correction.

Collagen production through CaHA-induced biostimulation



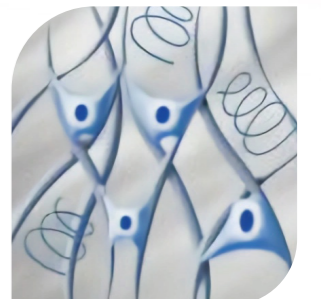
CaHA microspheres form a "scaffold" that provides mechanical stimuli, triggering fibroblasts to produce collagen.

Tight collagen network strengthens the dermis



A firm network of collagen fibres form in the dermis, providing a lifting and contouring effect.

Collagen-induced improvement of skin quality



The newly formed network of high-density collagen and elastin provides long-term structural support to the dermal microenvironment.



24 MONTHS

Core Ingredient

Hyaluronic Acid

Originated from microbial fermentation, with no animal origin ingredients. Cross-linked HA can achieve timely filling effect, and supply better support and over 6-month long treatment duration.

Calcium Hydroxyapatite

As HA gradually breaks down, CaHA starts working and continues to provide support and stimulate collagen growth while providing multiple results:

1

Stimulate collagen regeneration, long-term and stable

It can stimulate type I and type III collagen. The calcium and microsphere structure of CaHA provides a good microenvironment for regeneration, and causes denovo formation of tissue and vasculature.

2

Adsorb proteins and promote tissue repair

CaHA is slightly soluble in water and has strong ion exchange ability. It has strong adsorption effect on proteins and various growth factors.

3

Long-term skin quality improvement

CaHA has a milky white texture and has an immediate brightening effect after filling. At the same time, under the action of body fluids, the decomposed Ca²⁺ enters the calcium store.

Lidocaine

0.3% lidocaine can effectively reduce the pains caused by injection, supply comfortable injection experience.

Advantages

Singderm® Dual with Lidocaine, a rare dual-effect collagen biostimulator, addresses the multifaceted aging concerns of the face by combining the effects of hyaluronic acid and calcium hydroxyapatite.

1 Exclusive Technology

One filler to achieve dual effect, using SingLink® cross-linking technology to firmly combine CaHA and HA.

The product contains CaHA that is tightly bound to cross-linked HA (**cross-linked co-embedded**) and loosely bound (physically bonded) CaHA to achieve mid- to long-term and longer-lasting stable filling and the expected effect of stimulating collagen proliferation.

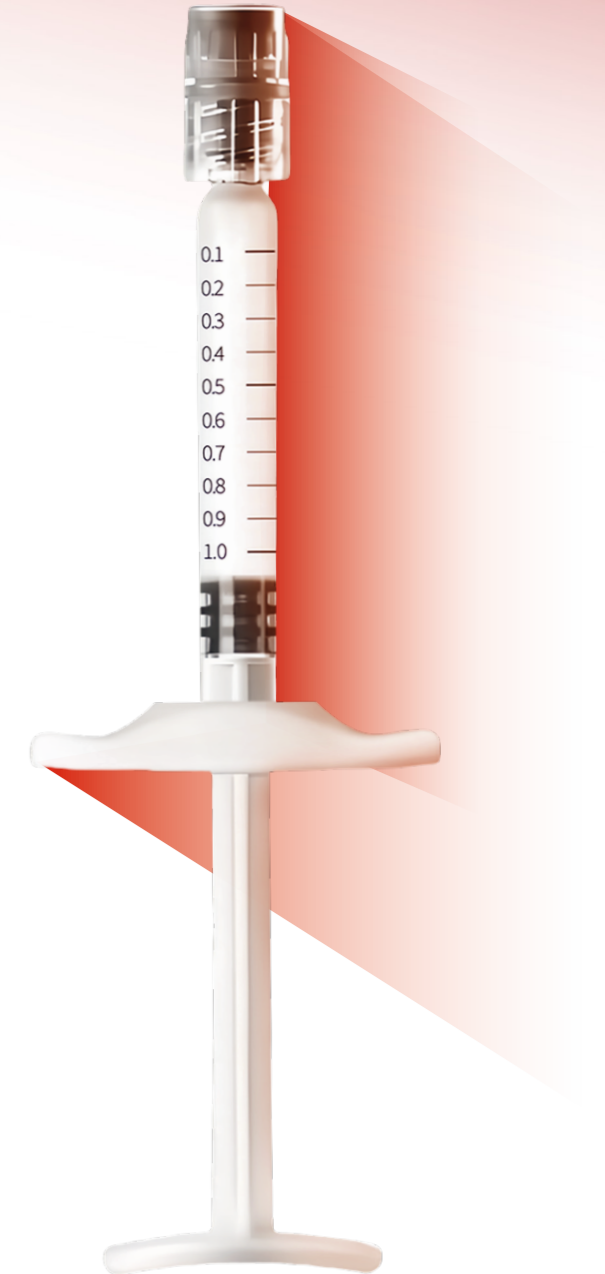


HA- Immediate volume restoration and lift

- 20mg/mL, cross-linked from non-animal source.
- HA raw material is EP(European Pharmacopoeia) approved for better biocompatibility.

CaHA-Long-lasting collagen stimulate for skin firmness and density improving

- **56%, high concentration CaHA microspheres:** Provides increased support, longer-lasting correction, and greater volume restoration.
- **25-45 microns diameter microspheres:** Uniform and concentrated particle size distribution for predictable and controlled volume correction with minimal risk of over-correction, leading to a more natural and refined look.
- **World-class raw material:** Sourced from renowned European suppliers, meeting stringent quality standards (ISO13779, US ASTM F1185). Fully chemically synthesized, non-animal, non-plant, non-GMO, with excellent biocompatibility and biodegradability.



Advantages

2 Safe

Both HA and CaHA are biodegradable anti-aging ingredients, significantly reduces bruising, pain and edema, and can also be naturally metabolized and broken down by the body.

3 Comfortable

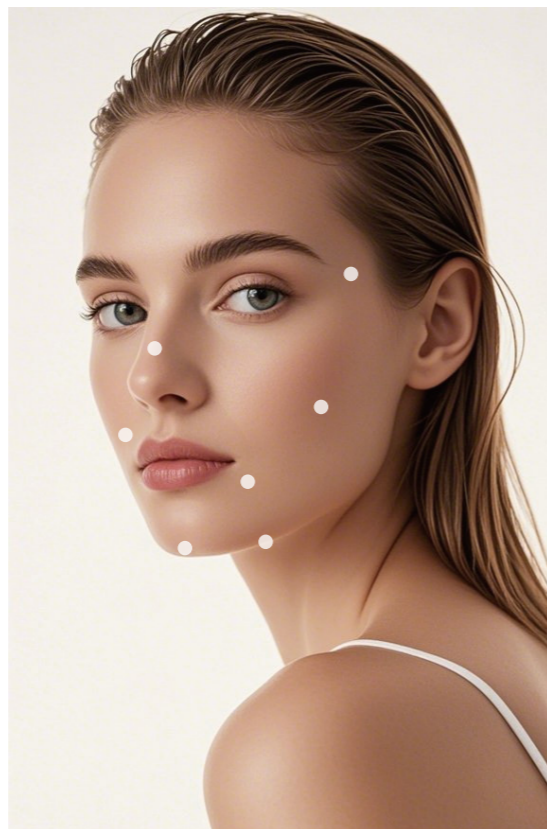
Singderm® Dual contains 0.3% lidocaine to bring painless and more comfortable injection experience.

4 High Satisfaction

Developed through three years of rigorous research by Singderm®'s chief engineer, Singderm® Dual with Lidocaine provides both immediate lifting results and long-term collagen stimulation. This innovative approach delivers exceptional patient satisfaction.

Injection Sites

- Temples
- Nose
- Cheeks
- Nasolabial Folds
- Chin
- Marionette Lines
- Jawline



Injection Layers

Deep dermal and sub-dermal layers.

Usage

One injection lasts for 24 months.

Treatment frequency varies based on individual needs and will be determined by doctor.

The recommended injection volume is with a maximum of 6mL per year.

Duration

The expected effect lasts 2 years.



Comparison

1. Compared with similar CaHA filler, like Raxxxsse:

The immediate lifting effect in hyaluronic acid preparations can last for 6-12 months, while the carboxymethyl cellulose in Raxxxsse (CMC) is generally absorbed in 2-3 months.

2. Compared with other biostimulators:

such as PLLA, there is no mixing step before use, easy to operate, and direct conduction to stimulate fibrosis. One injection lasting for 24 months.

3. Compared with conventional cross-linked HA products:

CaHA has a longer acting time and has significant biostimulant function.

Contraindications

Singderm® Dual is contraindicated for patients with severe allergies manifested by a history of anaphylaxis or history or presence of multiple severe allergies.

Singderm® Dual contains trace amounts of gram-positive bacterial proteins and is contraindicated for patients with a history of allergies to such material.

Singderm® Dual is not to be used in patients with known hypersensitivity to any of the components.

Singderm® Dual is not intended to be used in patients with known hypersensitivity to lidocaine or anesthetics of the amide type.

Singderm® Dual is contraindicated for patients with bleeding disorders.

Singderm® Dual is contraindicated for the area of the periorbital, glabella, lips and perioral region.
